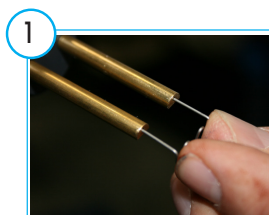
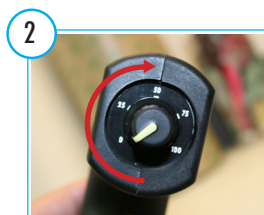


# HSW-200 Quick Start Instructions

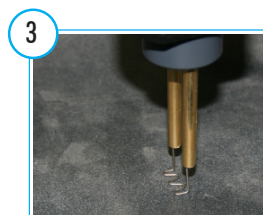
**PRO SPOT**



1  
Insert the staple that is appropriate to your specific need into one of the available hole sets (0°, 45°, or 90°)



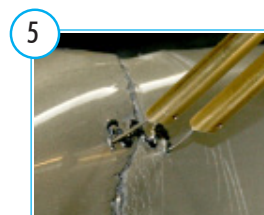
2  
Adjust the dial to your desired heat setting. It's recommended that you begin at the lowest setting and adjust up as needed.



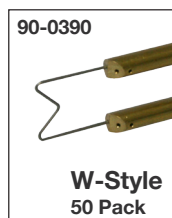
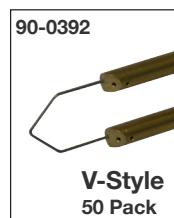
3  
Place the end of the staple to the surface and apply a small amount of pressure.



4  
While the staple is against the application area pull the welder trigger.

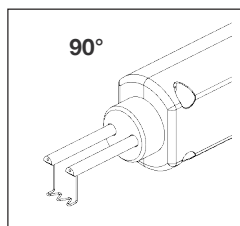
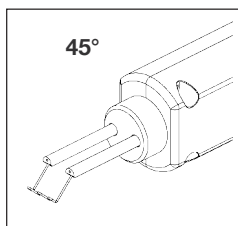
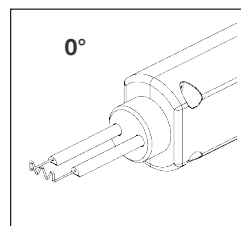


5  
The staple will melt into the plastic. Give the gun a slight twist, wait a couple of seconds, release the trigger and pull the gun away. Once the staple has completely cooled, clip off the excess wire.



**CAUTION!** If the system overheats - The white LED will begin to flash. Don't pull the trigger. Give the staple welder a few minutes to allow it to cool. Once the light stops flashing you can continue work.

**WARNING!** The staple gets extremely hot while being applied - Avoid contact with skin or flammable objects.



The HSW-100 is designed for flexibility. For easy access to hard to reach areas there are 3 positions available. A must have for tough to get to areas

## Technical Specifications:

Shipping Weight: 6 lbs. (2.75 kg)

Case Dimensions: 14" x 10" x 3.5" (35.56cm x 25.4cm x 8.89cm)

Auto Input Voltage: 110V / 220V

Manufactured by:  
**Pro Spot International, Inc.**

Toll Free (US only): 877 PRO-SPOT  
Phone: 760 407-1414  
E-Mail: info@Prospot.com

[prospot.com/products/staple-welder](http://prospot.com/products/staple-welder)

